

To: 1213427 Ontario Corporation o/a Picton Terminals
Agent: Fotenn Consultants (Youko Leclerc-Desjardins & Mike Keene)
Site/Location Address: 62 White Chapel Road, Picton ON
Date: July 11, 2019

The above property in question was flagged by municipal staff as needing a Section 59 clearance notice for source water protection. This means that there may be certain activities that are prohibited or restricted within this zone to ensure a safe municipal drinking water source.

The Town of Picton has four vulnerable areas (see map on page 3) around the municipal drinking water intake:

- Intake Protection Zone 1 – 1km radius around the intake, truncated to 120m where the zone meets land. This is the most vulnerable zone and has a vulnerability score of 10.
- Intake Protection Zone 2 – the next most vulnerable zone. This zone shows a 4-hour time of travel, meaning contaminated water within this zone could reach the intake within 4 hours or less. The vulnerability score of this zone is 9.
- Intake Protection Zone 3 - The Intake Protection Zone 3 for Picton is a very extensive area, and so, it was split into the Intake Protection Zone 3a and 3b.
 - The Intake Protection Zone 3a includes the Marsh Creek tributaries just outside the Intake Protection Zone 2. The Intake Protection Zone 3b includes upper watershed tributaries. The Intake Protection Zone 3a for Picton is directly upstream of the Intake Protection Zone 2 and so surface water drainage from the Intake Protection Zone 3a flows toward the intake, making this zone more vulnerable to contaminants than a typical Intake Protection Zone 3. The vulnerability score for the Intake Protection Zone 3a is 8.
 - The Intake Protection Zone 3b is the remaining total contributing watershed. This is the least vulnerable zone and has a score of 6. This zone can be used to track sources of contaminants considered issues-based drinking water threats. Issues-based work is required when there are elevated or exceedances of drinking water parameters occurring in the raw water samples taken at the drinking water intake.

Significant drinking water threats can occur in zones with a vulnerability score of 8 or higher. When these threats occur, or are proposed to occur on the landscape, the risk management official will negotiate, with the landowner/renter, a risk management plan to ensure the drinking water threat is effectively managed. Risk Management Plans can

be used for the majority of the 20 prescribed drinking water quality threats, with the exception of waste and sewage threats.

A review of the property and the proposed activities was completed by the municipally-appointed Risk Management Officials at the Quinte Conservation Office. The subject property falls within the Intake Protection Zone 3b for Picton's municipal drinking water supply. Because this zone is the least vulnerable of all zones for the Town of Picton's drinking water intake, with a vulnerability score of 6, no significant threats can occur and no clearance notice is required.

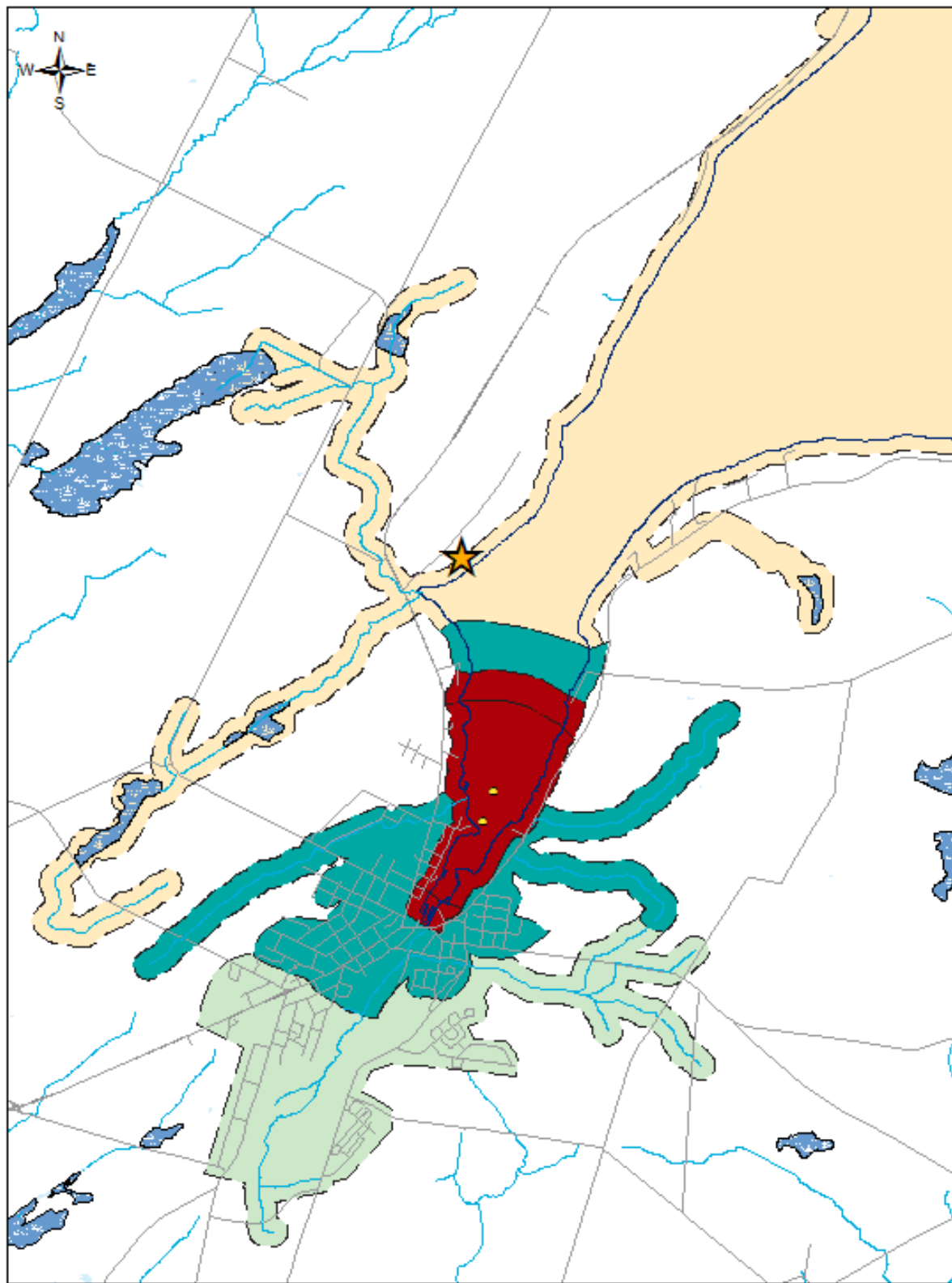
Although no clearance notice or risk management plan is required*, due to the high vulnerability of the drinking water intake, coupled with the numerous activities taking place on the subject property and surrounding area, the Source Protection department at Quinte Conservation is supportive of the greatest protection that can be purveyed on the subject property to ensure that no chemicals of concern leave the property and migrate to the intake and that no future drinking water issues are created.

Sincerely,

A handwritten signature in black ink that reads "Amy Dickens". The signature is written in a cursive style with a large initial "A" and a long horizontal stroke at the end.

Risk Management Official

*Please note, this letter applies only to the policies in the Quinte Source Protection Plan related to prohibited activities or activities requiring a risk management plan prior to proceeding. The clearance does not relieve the proponent of any other Quinte Conservation approval requirements.



Legend

- Intakes
- Subject Property
- IPZ 2
- IPZ 3a
- IPZ 3b
- Wetland Area
- Shoreline

Picton Intake Protection Zones